

Compact disc player

LOADING COMPACT DISCS

CAUTION

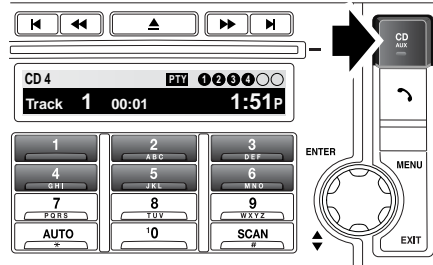
! Do not force the disc into the slot.

Note: Some music CD manufacturers are using data encryption to copy-protect their recordings and prevent the production of counterfeit copies. These CDs differ from the internationally agreed CD audio standard, RedBook, a standard that serves as the operating basis for all CD players and changers. Copy-protected CDs may fail to play in your CD changer or may be played subject to various limitations, e.g. sound quality may be impaired. If you do experience a problem, try the CD in other players before contacting the CD vendor.

CAUTION

! Do not use discs with paper labels, Dual Discs or DVDPlus discs. The front loading CD player may load and play this type of disc, however, it is likely that the disc will not eject and will block the CD mechanism. Such damage to a CD player will not be covered under warranty.

Loading a CD



E87310

Press the **CD** mode button, then press the numbered button of the position in which the compact disc is to be stored (**1** to **6**).

Make sure that the label side of the disc is facing upwards then, when prompted, partially insert the disc. The player mechanism will draw the disc in automatically and the disc number will appear on the display.

Note: If there is a problem with a disc that has been loaded (inserted upside down, wrong format etc.), **Disc unreadable** or **Disc error** will appear in the information display, and the disc will be ejected. If the problem can be corrected (disc upside down for example), then re-insert the disc in the correct manner. If the problem cannot be rectified, do not re-insert the disc.

There will be a pause while the player reads information from the disc, then play will start at the first track.

To load another CD, press another numbered button (**1** to **6**) and repeat the loading procedure.

Note: The six circles in the top right-hand side of the information display of the premium unit, represent the six available CD positions. As soon as a CD is loaded, its number will appear in the circle.

Compact disc player

EJECTING COMPACT DISCS

It is only possible to eject a single disc, if it is currently selected or playing.

To eject a disc, press and release the eject button. A confirmation message will be shown on the information display. After a short pause, the disc will be presented. The disc should then be removed.

Note: *If the disc is not removed from the slot within fifteen seconds, it will be drawn back into the player.*

EJECTING MULTIPLE COMPACT DISCS

All the discs loaded in the player can be ejected in sequence. To eject all of the discs, press and hold the eject button. A confirmation message will be shown on the information display. After a short pause, the first disc will be presented. The disc should then be removed.

The discs will be ejected one at a time with a short pause in between each.

To stop the process, press any CD number button (1 to 6).

COMPACT DISC SELECTION

To select one of the loaded discs, briefly press the disc number required (1 to 6). If the position selected does not contain a disc, there will be a pause and a message will appear on the information display.

Once a disc has been inserted, there will be a pause while the player reads the disc information. Playback will then begin at the start of track one.

COMPACT DISC PLAYBACK

To start compact disc playback, briefly press the **CD** mode button, followed by the disc number required. If no disc number is selected, playback will begin at one of two places:

- If the discs have not been removed since their last use, playback will begin from the point at which it was stopped previously.
- If the discs have not been used since they were inserted, playback will begin at the start of the first loaded disc.

TRACK SELECTION



E83962

To return to the start of a track, or skip to the next track during playback, press and release the appropriate button.

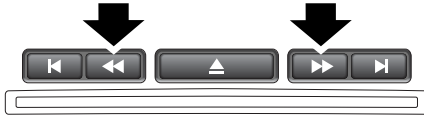
COMPACT DISC PAUSE

To pause or stop compact disc playback, briefly press one of the other mode buttons, **AM** or **FM** for example. Press the **CD** button to continue playback.

CD play will also pause when the volume is turned down to **0**. Play will resume when the volume is turned back up.

Compact disc player

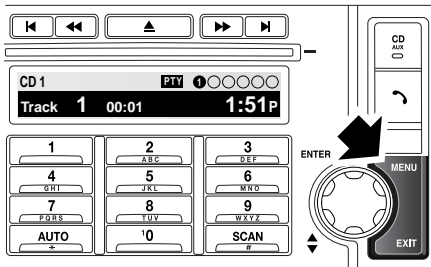
FAST FORWARD/REVERSE



E83964

To search forwards or backwards through the current track, press and hold the relevant search button.

COMPACT DISC FUNCTION MENU



E82981

The following extra functions are available using the compact disc function menu:

- Random
- CD text
- CD scan

Select compact disc mode, then briefly press the **MENU** button. Use the rotary control to select **CD settings**. Press the rotary control to confirm selection. Use the rotary control to select the required function and press to confirm selection. Rotate the control to enable or disable the function.

COMPACT DISC DISPLAY OPTIONS

Some compact discs, including MP3 files, have information which can be displayed on the display screen. Instead of the track number, it is possible to view the track title with the CD text function enabled.

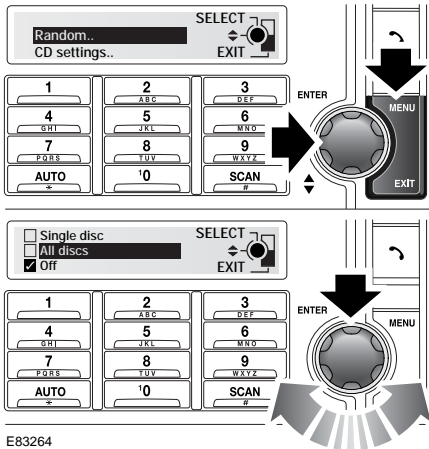
To enable or disable the CD text function, select compact disc mode, then briefly press the **MENU** button. Use the rotary control to highlight **CD settings** and press to confirm selection. Using the rotary control, select **CD TEXT** from the menu. Rotate the control to select **On** or **Off** and press to confirm selection.

Compact disc player

SHUFFLE/RANDOM

Random alters the playback sequence for the loaded discs. The tracks are selected randomly by the player.

Random selection



E83264

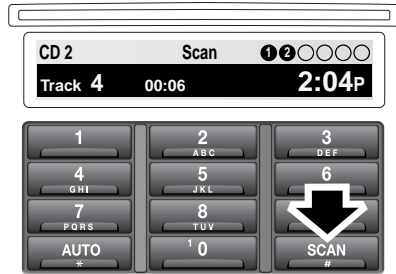
1. Press the **Menu** button to access the menu.
2. Use the rotary control to select **Random** and press to confirm selection.
3. From the following menu, use the rotary control to select **Off**, **All discs** or **Single disc**. Press the control to confirm selection. Press the **EXIT** button to return to the previous menu.

Note: When **All discs** is selected, the system will ignore MP3 discs and only play standard audio discs.

COMPACT DISC TRACK SCANNING

Compact disc track scan allows you to sample the music on a compact disc. This feature plays the first ten seconds of each track in numerical order. Play will then begin at the start of track one.

CD scan



E82983

Press the **SCAN** button to enable this function. To disable the function, and to continue the currently playing track, press the **SCAN** or **EXIT** button again.

Note: While in CD scan mode, pressing the previous track button will resume normal play at the current track. Pressing the next track button will move to the next track and resume normal play.

Compact disc player

MP3 FILE PLAYBACK



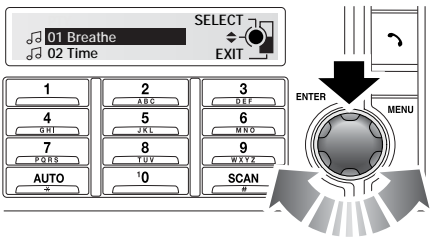
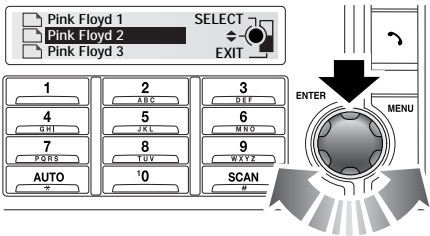
E82984

When a data disc (containing MP3 encrypted music data) is inserted into the compact disc slot, **MP3** will appear at the top of the display. The disc will play the tracks in the order they appear on the disc.

All folder information is ignored and the tracks are numbered as they are ordered.

If an MP3 recording is made with a compression rate lower than 128k some Digital Signal Processing (DSP) functionality may be lost.

To make sure that the best sound quality is achieved the instructions or information provided with the recording software should be read carefully and adhered to.



E83753

If you wish to navigate through folders to select specific tracks, press the rotary control to access the file structure. Use the rotary control to highlight the required folder or track and press to select.